



# Vulnerable Employment

of Women in Punjab

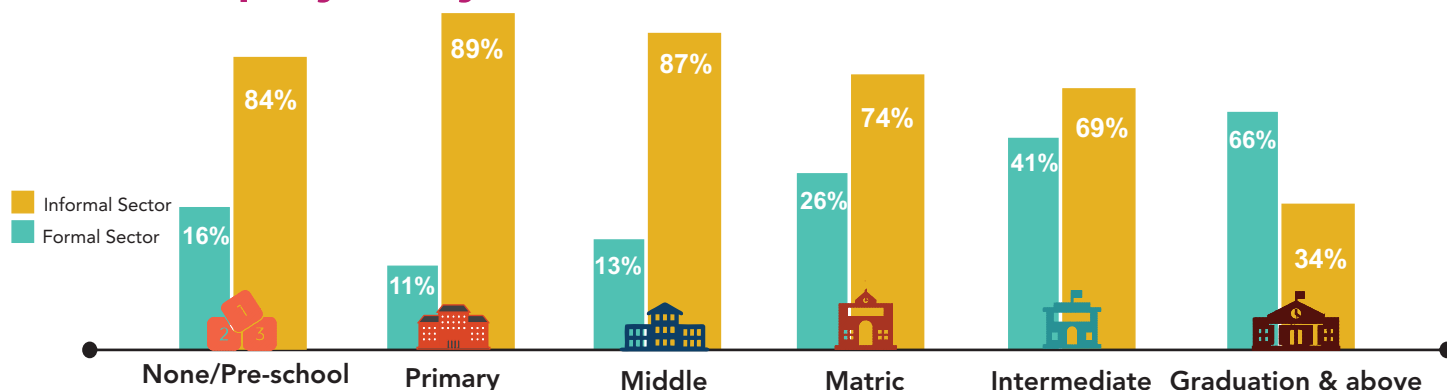
## Women in Vulnerable Employment (%)



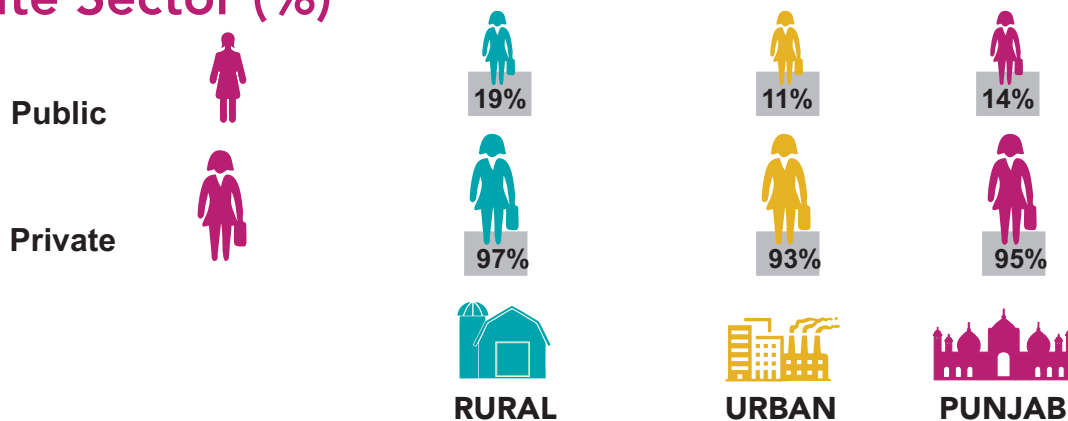
## Women in Non-Contractual Employment (%)



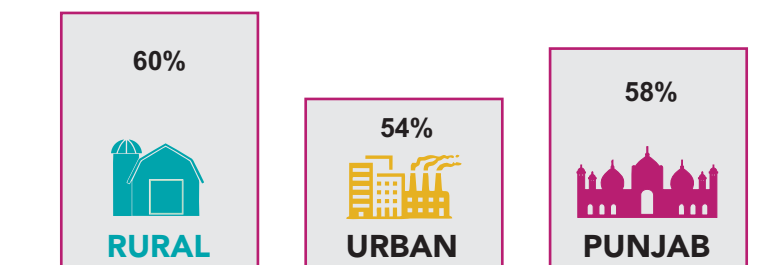
## Employed by Education(%)



## • Non-Contractual Employment by Public & Private Sector (%) •

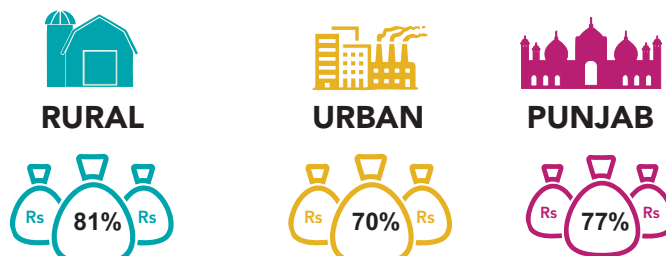


## • Part Time and Underemployed (%) •



## • Women Earning below Minimum Wages in Punjab (%) •

Women(ages 15-64)



Youth (ages 15-29)



**Note:** Minimum wage in Punjab is 15000 PKR

**Contributors:** Dr. Yasmin Zaidi and Noormah Rizwan

### About PCSW

The Punjab Commission on the Status of Women ("PCSW") is a Special Institution of the Women Development Department, Government of Punjab, established under the PCSW Act, 2014 as an oversight body to ensure that laws, policies and programs of the Government of Punjab promote women's empowerment; that efforts are made for expansion of opportunities for socio-economic development of women, and discrimination against women in all forms is eliminated.

**PUNJAB COMMISSION  
ON THE STATUS OF WOMEN**

